

# Operator Manual

## HTP123 HeatPress

### WARNING! - CAUTION!



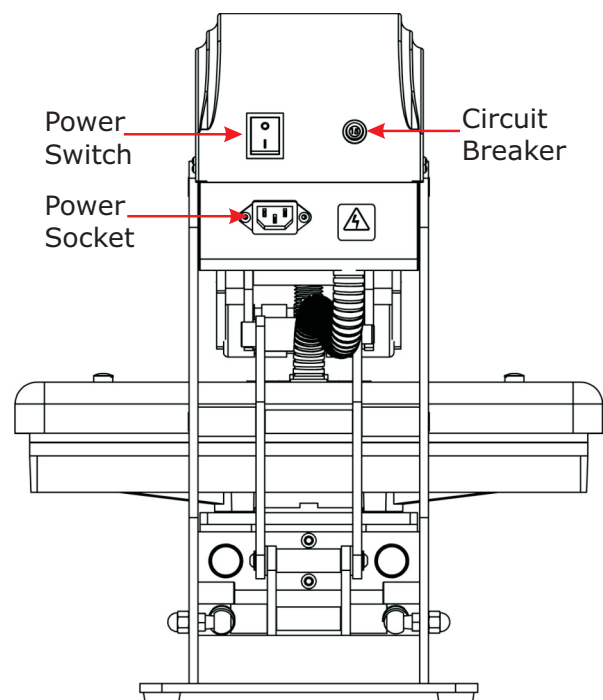
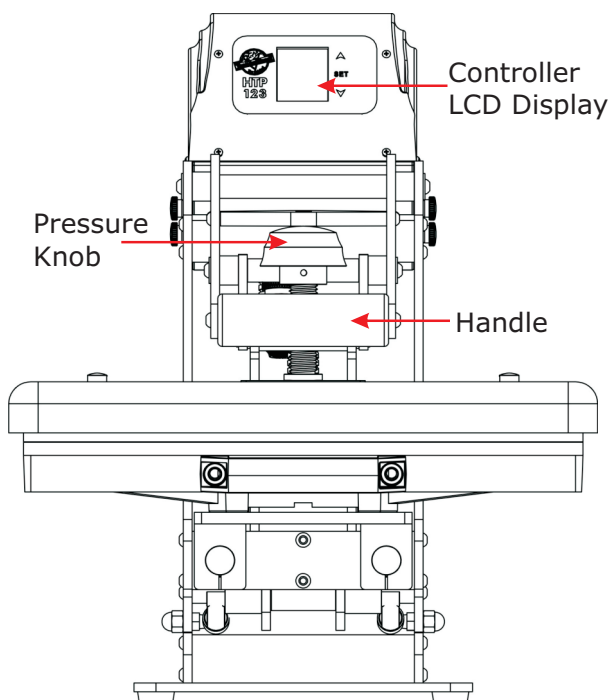
Note: This device must be operated by one professional operator only! Keep hands clear from moving parts! Hot surface! Don't touch Heater during operation! Remove from power supply for all maintenance and servicing to avoid electrical shock!



### Specifications

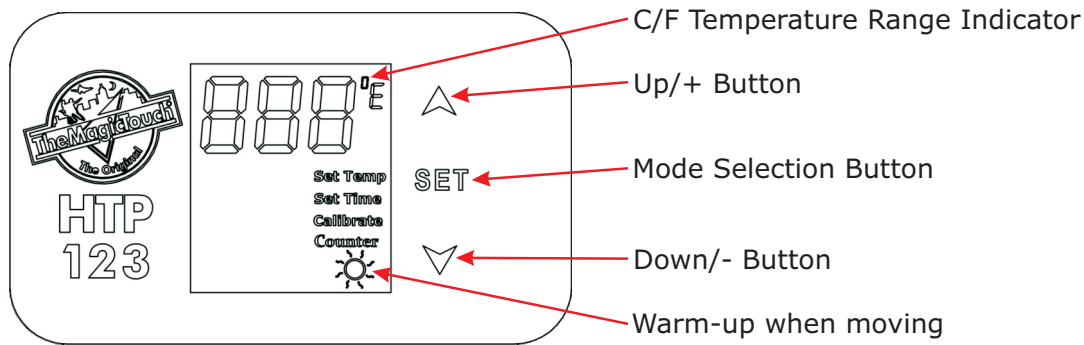
Dimensions, open (L x W X H)	63 x 41 x 86 cm
Printable Area	38 x 38 cm / 15" x 15"
Weight	36 kg
Voltage	110-120/220-240 V
Amperage	120V - 16A / 240V - 8A
Maximum Wattage	1800 W
Environmental Conditions	10-40°C / 50-105°F, 30-70% RH
Temperature Range	80°C / 176°F to 220°C / 430°F
Timer Range	0-999 Seconds
Counter Range	0-999
Warranty	10 Years on HeatPlaten / 1 Year Parts

### Machine Legend



# Control Panel Legend

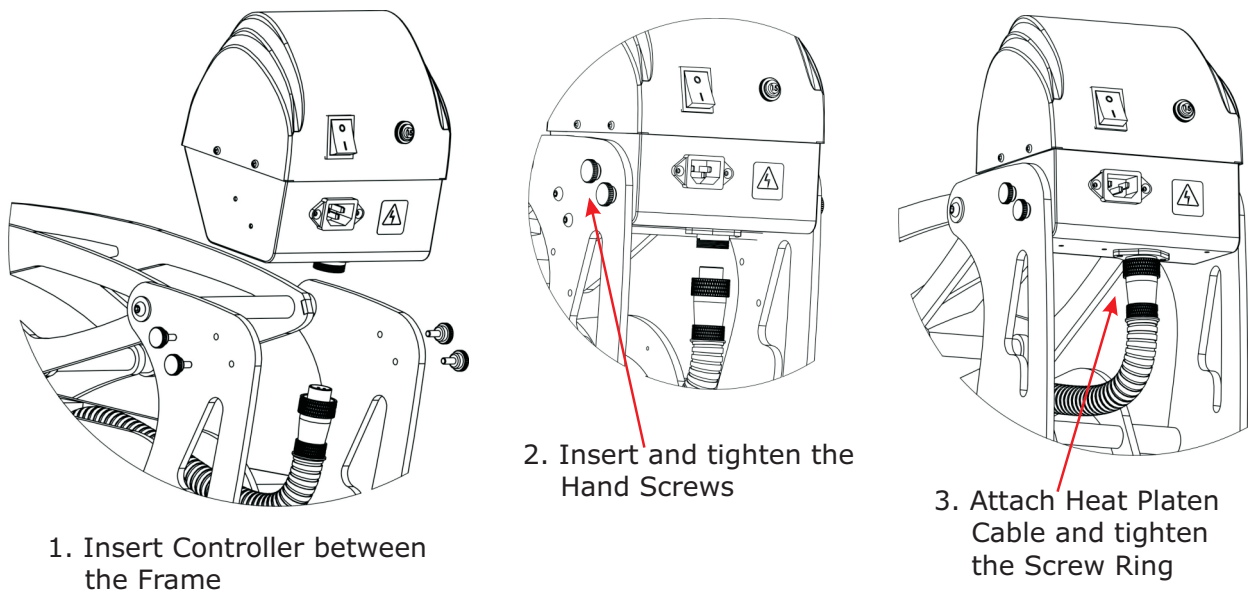
LCD Display    Set Temperature when lit



Set Time when lit

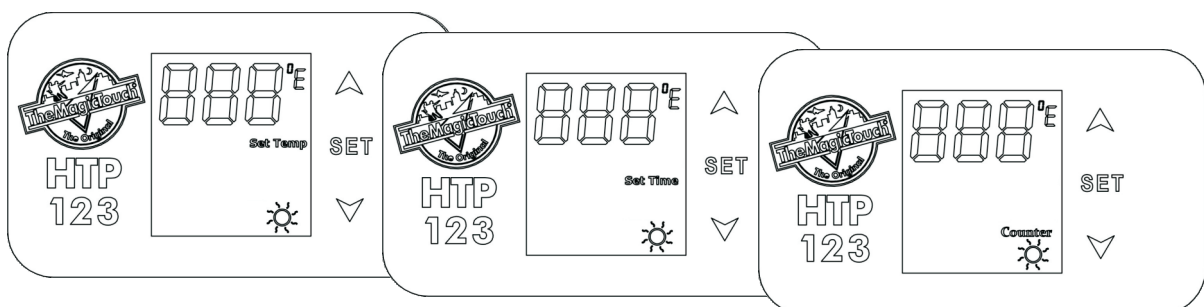
Set Counter when lit

## Controller Assembly



Attach the Power Cable and switch the machine on. The Controller LCD should illuminate.

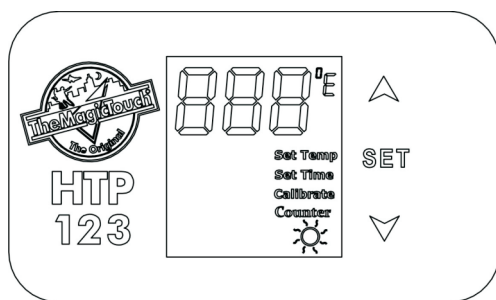
## Adjusting Temperature, Time, Counter and Pressure



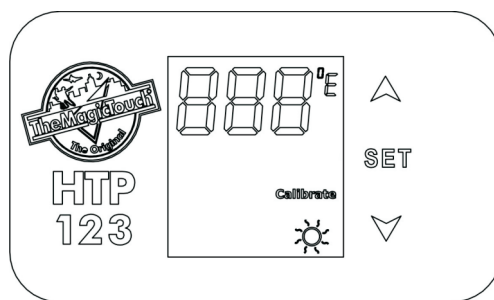
Press Set Button > 'Set Temp' will be lit > Select Temperature with the Up or Down Button > Press Set Button again > 'Set Time' will be lit > Select Time with the Up or Down Button > Press Set Button again > 'Counter' will be lit > Use the Down Button to re-set Counter to 1. Press the Set Button again to return to StandBy/Idle. If you don't need to make changes just press the Set Button again to skip the Mode. At the end all Mode Indicators must be off to return to StandBy/Idle.

To adjust the Pressure turn Pressure Knob clockwise to increase the pressure and counter-clockwise to decrease. High pressure would be the point where you just still can close and lock the press.

## Switch between C and F      Temperature Calibration

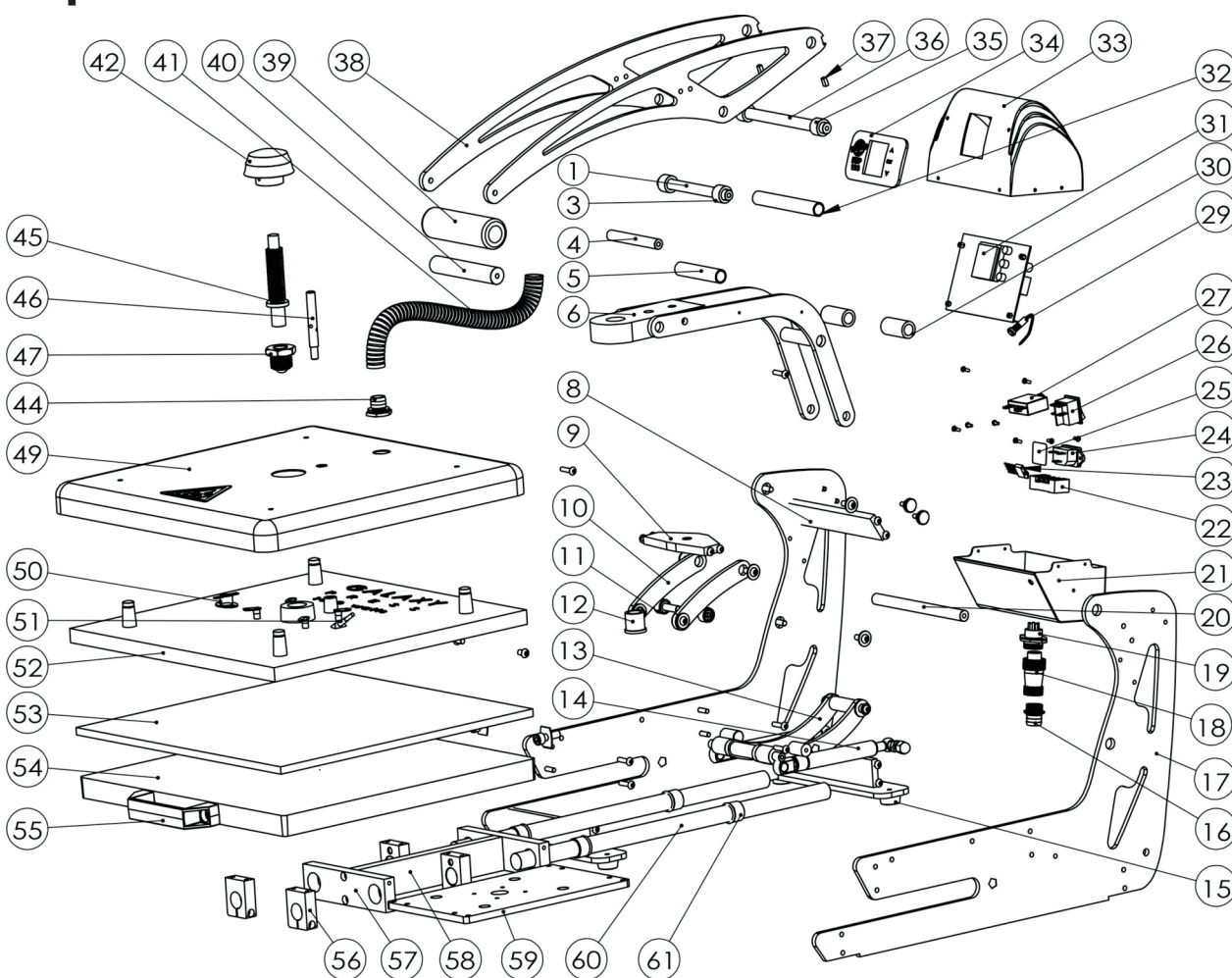


Press the Set and the Up Button together and hold for 3 Seconds to switch between the C and F temperature range. The selected will be shown by the C/F Temp Indicator.



Press the Set and the Down Button together for 3 Seconds to enter the Calibration Mode. "Calibrate" will be lit. Use Up or Down Button to adjust the Value. Press Set button to quit.

## Explosion View and Parts List



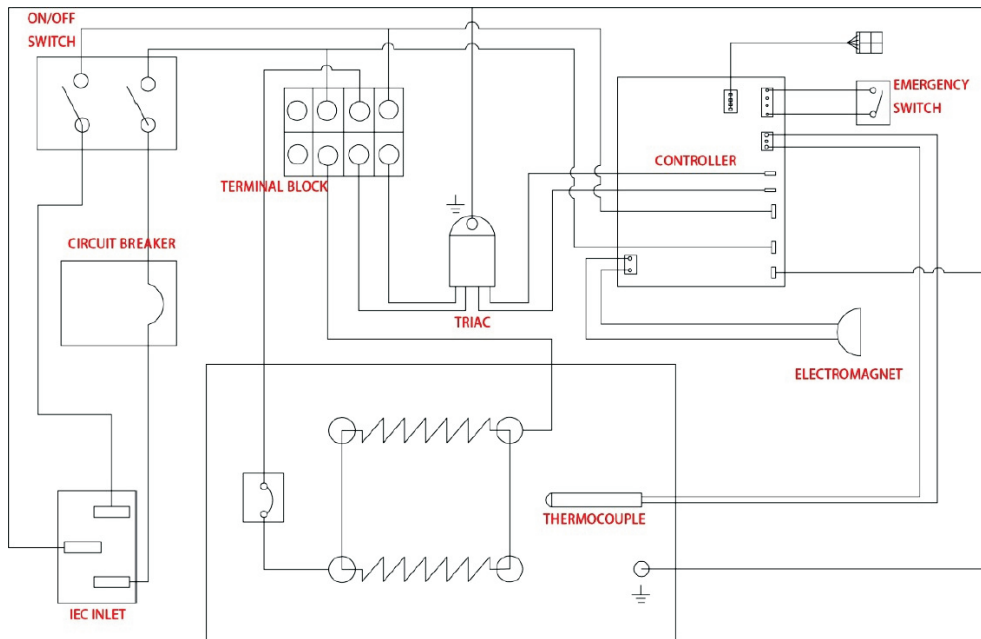
No.	Part Name(Chinese)	Part Name(English)	Part No.	Qty.
1	柱栓12-126 GC1-19	Thread pin	1200073	1
3	胶垫圈20-13-12.75黑 GC1-10	Nylon Washer 20-13-12.75	2000258	2
4	柱栓12-89 GC1-20	Thread pin	1200074	1
5	铁套管16-13-76 GC1-27	Metal bushing	1200048	1
6	支撑块B嵌铜套 GS-101ZB	Heat Platen Holder	1201716	1
8	支架撑板B GC1-17	Supporting block	1207712	3
9	磁吸板1B GC1-03A	Supporting Sheet	1201718	1
10	摇臂印台连接杆B GC1-06B	Bridge Link	1200583	2
11	胶垫圈20-13-2黑 GC1-12	Nylon Washer 20-13-2	2000255	2
13	气弹簧连杆B GC1-24B-Y	Bridge Link	1201714	2
14	阻尼弹簧/18-80-350N	Gas spring	1800055	2
15	脚垫 XD2512-148黑	Rubber Foot	1800317	4
16	导管接头B GZ-101B	Connector	1200143	1
17	印台支架侧板B GC1-01B-Y	Machine Side Body	1201711	2

18	航空插头5芯(插头)焊线 AT20-5TB-A-WD	5 phase aviation plug(Male) with wires welded	1800954	1
19	航空插头5芯(插座)焊线 AT20-5TB-B-WD	5 phase aviation plug (Female) with wires welded	1800955	1
20	柱栓12-89 GC1-20	Thread pin	1200074	1
21	表盘底座C-2 NP161130	Control Box Bottom	1201706	1
22	双排三位栅栏接线排 TB1503L	Terminal Block	1800345	1
23	可控硅 DX146-10	TempControl Triac	1800586	1
24	IEC插座 DB-14-1	socket	1800344	1
25	电压标签 ELE-K005	Voltage Label	1800735	1
26	船型开关 RK1-01	On/off switch	1800346	1
27	过载保护器15A L1150271504-01	Circuit breaker 15A	1800160	1
29	柱形门磁(车牙加工) MC-0627	Magnet switch	1800620	1
30	胶垫圈20-13-39.5黑 GC1-11	Nylon Washer	2000129	1

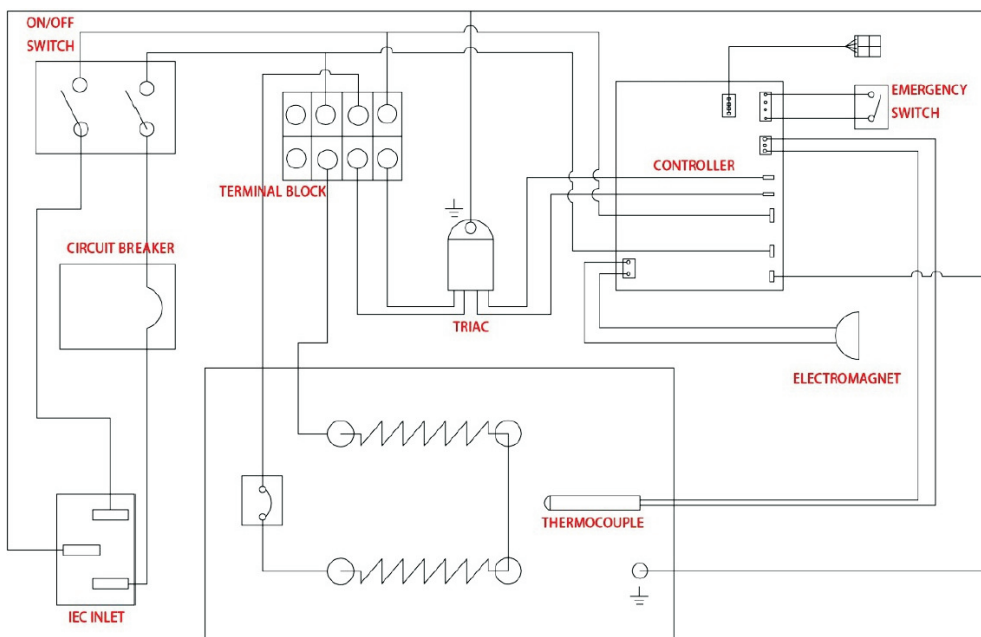
31	控制板 GSK-G02	Circuit Board	1800353	1
32	铁套管16-13-113.5 GC1-28	Metal bushing	1200049	1
33	控制盒上罩壳乳白 CB-01	Control Box Top Cover	1201705	1
34	控制板面贴 123	Label	1201704	1
35	胶垫圈20-13-12.75黑 GC1-10	Nylon Washer 20-13-12.75	2000258	2
36	柱栓13-164 GC1-18	Thread pin	1200050	2
37	磁铁 MT-01-B	magnet	1800609	1
38	摇臂支架侧板B(GS-101-1115) GM-06	Machine Arm	1200660	2
39	手柄轴胶套(内径19*T5*118mm) TB-111	Foam Grip	1200645	1
40	手柄轴20-114 TB-33	Handle shaft	1200145	1
41	PP阻燃波纹管Φ17*21.2	PP tube	1800835	1
42	调压旋钮塑胶黑	Adjustment knob	1201716	1
44	波纹管接头黑 TCR-01-B	Tube connector	1800135	1

45	调节螺栓1 GH-47	Adjustment Spindle	1800087	1
46	限位螺栓10-82 HPP-41	Balance screw	1901074	1
47	紧固螺母 GC1-104	Adjustment spindle bottom	1800142	1
49	发热板罩板B2 GC2-46-2	Heat platen cover	1201703	1
50	突跳式温控器 TMS-01	Thermostat	1800133	1
51	热电偶 THC-01	Thermocouple	1800281	1
52	发热板 HP-1515-A-D	Heat platen	1200287	1
53	硅胶垫 SP-1515-9-G	Silicon pad	1800422	1
54	底板 LP-1515-B-S	Lower platen	1800802	1
55	铝方拉手 JZN43	Sliding Handle	1800134	1
56	轴承座C GCT-02	Bearing Block	1201720	4
57	轴杆固定板C GCT-01	Plated Bar Holder	1201721	2
58	抽拉撑板C GCT -04B	Supporting Block	1201719	1
59	印台抽拉底座B GCT-03B	Supporting Block	1201715	1
60	轴杆B GCT-05B	Plated Bar	1200411	2
61	无油衬套2015 CPB-01	Cooper Bearing	1200075	4

## Electrical Schematic 110-120V



## Electrical Schematic 220-240V



In case of Operating Trouble please contact your local TheMagicTouch Office, Distributor or Dealer or TheMagicTouch GmbH, Germany at +49 6071 921 800.  
[www.themagictouch.com](http://www.themagictouch.com)