



Operator Manual HTP123 PRO HeatPress

WARNING! - CAUTION!



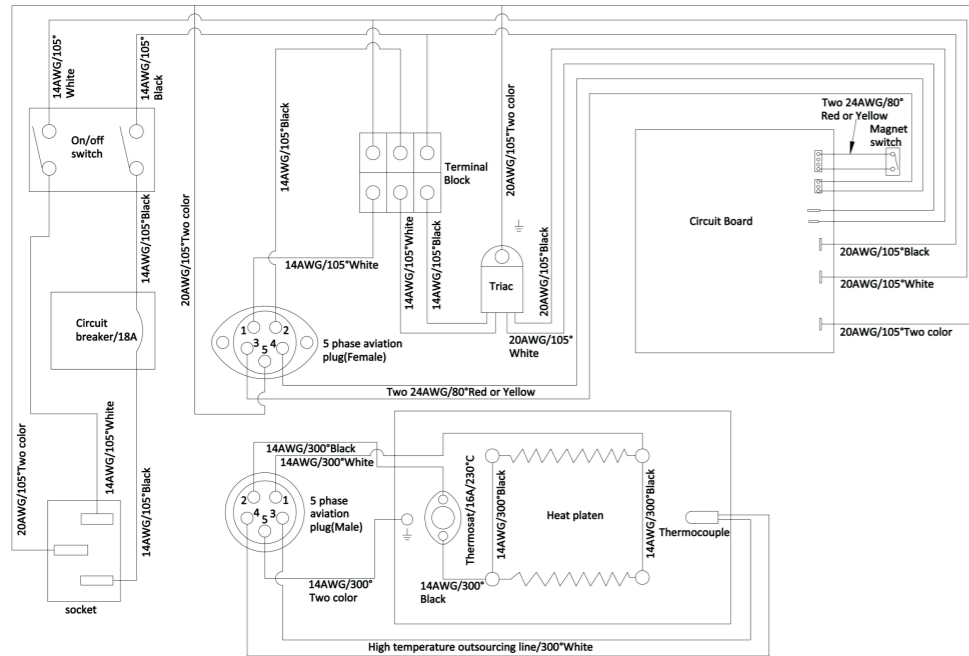
Note: This device must be operated by one professional operator only! Keep hands clear from moving parts! Hot surface! Don't touch Heater during operation! Remove from power supply for all maintenance and servicing to avoid electrical shock!



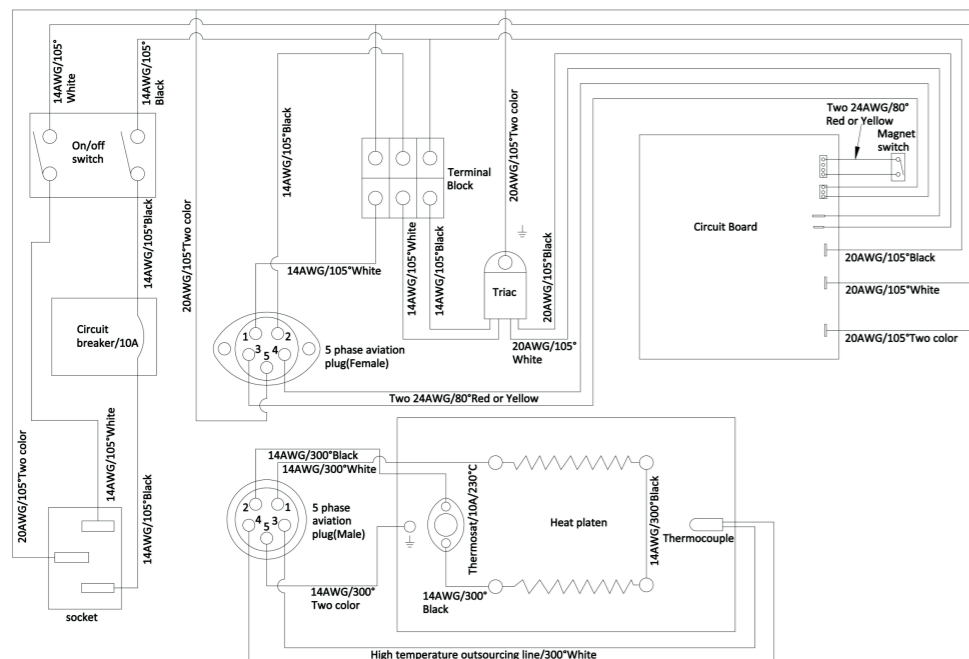
34	J.03.03.0070	washer 20-13-25 GC1-10B	2
35	J.02.01.0001	Heat platen HP-16.5*16.5-A-5	1
36	J.03.06.0169	Blance screw	1
37	J.03.04.0076	Thermocouple PT100	1
38	J.03.04.0062	Thermostat TMS-01	1
39	J.03.05.0146	Heater cover A2 GC1-46-2	1
40	J.03.05.0381	PP tube joint GZ-101	1
41	J.04.04.0006	PP tube	1
42	J.03.06.0136	Cup heat bolt M8*20	1
44	J.03.06.0186	Flat washer 20*8*2	1
45	J.03.05.0382	Pressure screw base bolt GC1-104	1
46	J.03.06.0149	Set screw M5-L4	1
47	J.03.05.0380	Pressure Screw GH-47	1
48	J.03.05.0140	Pressure Knob	1
49	J.03.03.0016	Foam Grip	1
50	J.02.05.0007	Handle Shaft	1
51	J.03.05.0132	Machine arm B GC1-05B-Y	2
52	J.03.05.0142	Holding Sheet 1 GC1-03A	1

53	J.03.06.0058	Magnet MT-01-B	1
54	J.03.05.0575	Arm link D	2
55	J.02.05.0005	Threaded pin 12-126 GC1-19	1
56	J.03.05.0080	Aluminium sleeve 17-13-76 GC1-27	1
57	J.03.05.0141	Heater holding block GS-101ZB	1
59	J.02.05.0006	Threaded pin 12-89 GC1-20	1
64	J.03.05.0576	Arm link D	2
65	J.03.01.0014	Sticker HTP123	1
66	J.03.05.0130	Controller box cover CB-01	1
67	J.03.04.0139	Controller board GSK-G04	1
68	J.02.04.0131	Traic DX146-10	1
69	J.03.04.0078	Terminal Block	1
70	J.03.04.0077	Socket DB-14-1	1
71	J.02.04.0139	Circuit Breaker 10A	1
72	J.03.05.0131	Controller box base C-2 NP161130	1
73	J.03.04.0127	Magnet switch M8*30	1
74	J.02.04.0094	5 phase aviation plug(Female)with wires welded	1
75	J.02.04.0093	5 phase aviation plug(Male) with wires welded	1

Electrical Schematic 110-120V



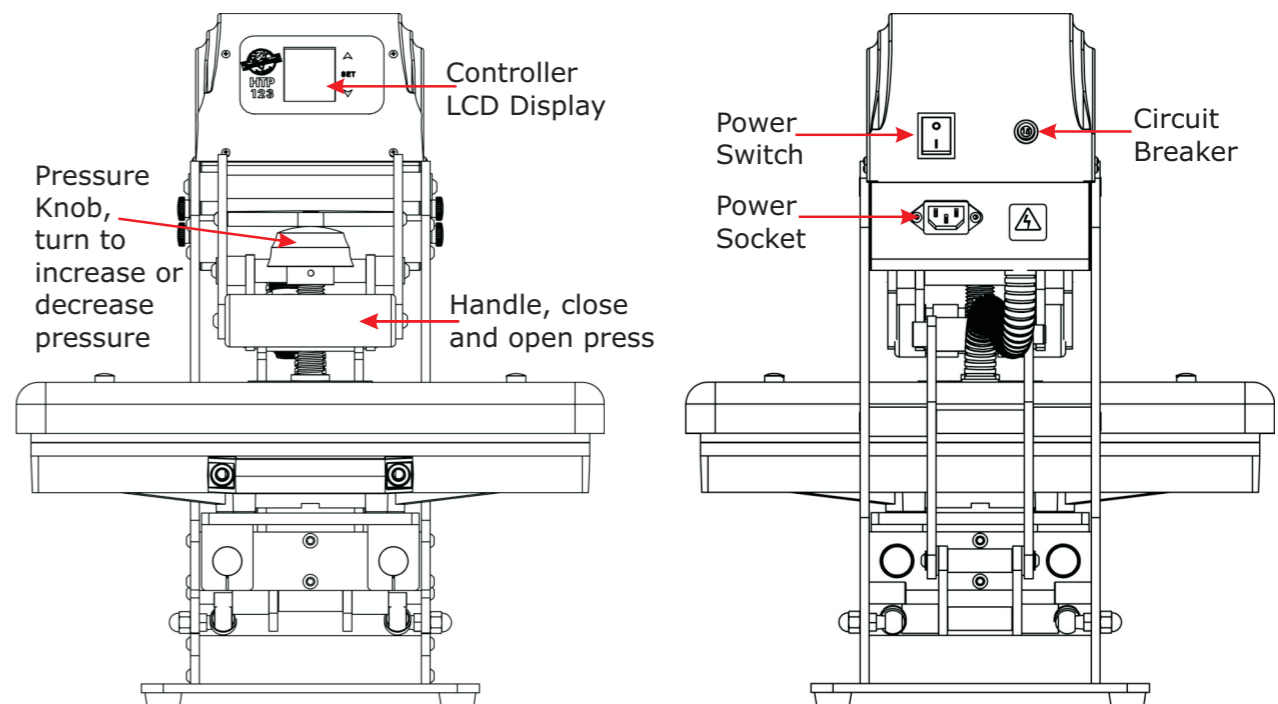
Electrical Schematic 220-240V



Specifications

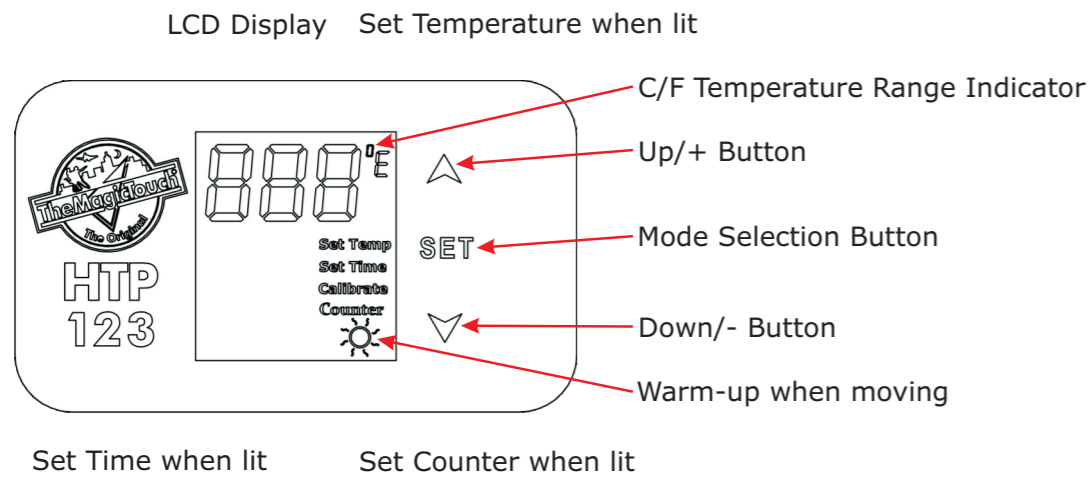
Dimensions, open (L x W X H)	63 x 44 x 86 cm
Printable Area	42 x 42 cm / 16.5" x 16.5"
Weight	46.5 kg
Voltage	110-120/220-240 V
Amperage	120V - 16.4A / 240V - 8.2A
Wattage	1800 W
Environmental Conditions	10-40°C / 50-105°F, 30-70% RH
Temperature Range	80°C / 176°F to 220°C / 430°F
Timer Range	0-999 Seconds
Counter Range	0-999
Warranty	10 Years on HeatPlaten / 2 Year Parts

Machine Legend

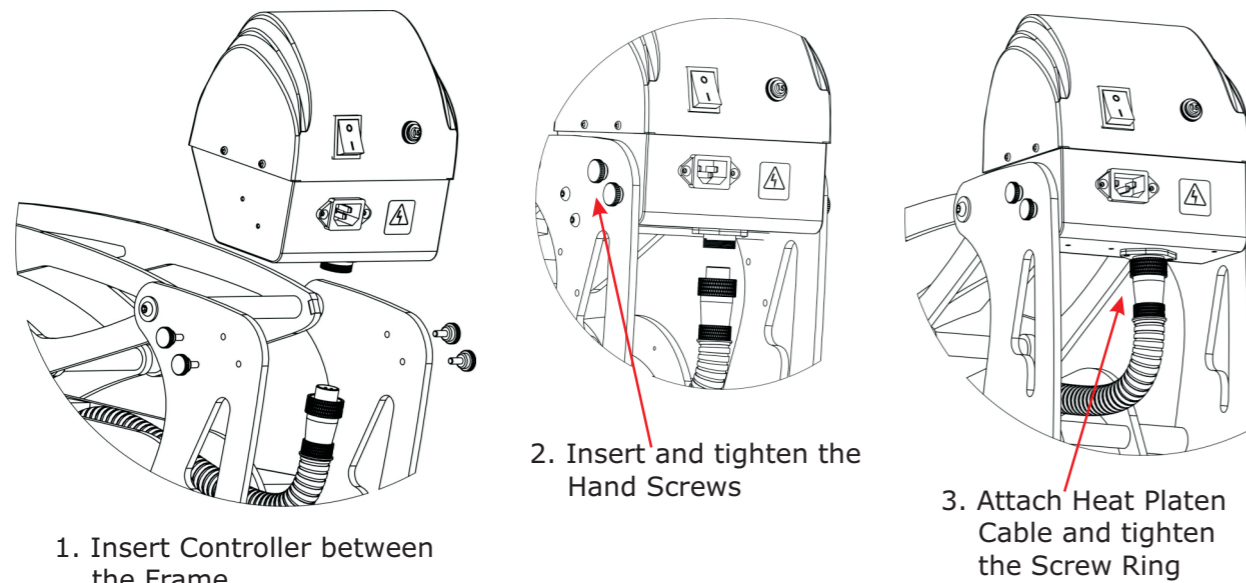


In case of Operating Trouble please contact your local TheMagicTouch Office, Distributor or Dealer or TheMagicTouch GmbH, Germany at +49 6071 921 800. www.themagictouch.com

Control Panel Legend

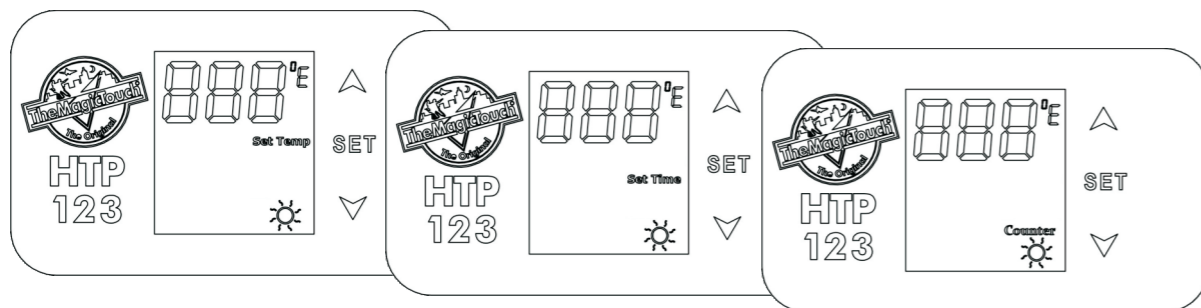


Controller Assembly



Attach the Power Cable and switch the machine on. The Controller LCD should illuminate.

Adjusting Temperature, Time, Counter and Pressure



Press Set Button > 'Set Temp' will be lit > Select Temperature with the Up or Down Button > Press Set Button again > 'Set Time' will be lit > Select Time with the Up or Down Button > Press Set Button again > 'Counter' will be lit > Use the Down Button to re-set Counter to 1. Press the Set Button again to return to StandBy/Idle. If you don't need to make changes just press the Set Button again to skip the Mode. At the end all Mode Indicators must be off to return to StandBy/Idle.

To adjust the Pressure turn Pressure Knob clockwise to increase the pressure and counter-clockwise to decrease. High pressure would be the point where you just still can close and lock the press.

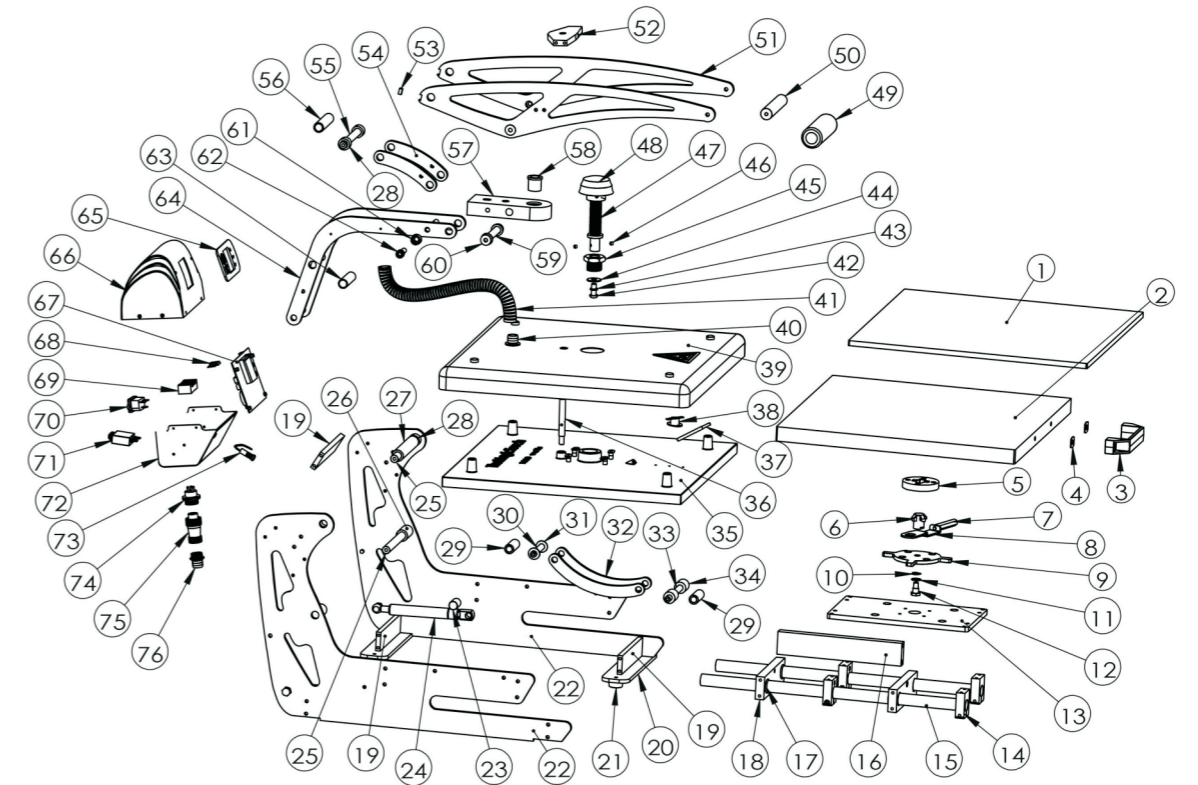
Switch between C and F Temperature Calibration



Press the Set and the Up Button together and hold for 3 Seconds to switch between the C and F temperature range. The selected will be shown by the C/F Temp Indicator.

Press the Set and the Down Button together for 3 Seconds to enter the Calibration Mode. "Calibrate" will be lit. Use Up or Down Button to adjust the Value. Press Set button to quit.

Explosion View and Parts List



No.	Material No.	Name	Qty
1	J.03.07.0002	Silicon pad SP-16.5*16.5-9-G	1
2	J.02.02.0033	Lower platen LP-16.5*16.5-C-5	1
3	J.03.06.0053	Handle JZN43	1
4	J.04.06.0004	Heat insulation sheet	2
5	J.03.05.0123	Ramlock female part GH-111	1
6	J.03.05.0126	Ramlock male part GH-114	1
7	J.03.05.0122	Ramlock handle GH-1131	1
8	J.03.05.0125	Ramlock locking set GH-113	1
9	J.03.05.0124	Ramlock base GH-112	1
10	J.03.06.0064	Spring washer 15*10*0.3	1
11	J.03.06.0063	Flat washer 16*10*1	1
12	J.03.05.0392	Ramlock screw GH-24-B	1
13	J.03.05.0139	Lower platen base B GCT-03B	1
14	J.03.05.0144	Bearing base GCT-02	4
15	J.02.05.0008	Axostyle B GCT-05B	2
16	J.03.05.0143	Holding block B GCT-04B	1
17	J.03.03.0008	O-shape washer WSH-02	4
18	J.03.05.0145	Axostyle holding block GCT-01	2
19	J.03.05.0136	Holding block B GC1-17	3
20	J.03.05.0137	Machine foot base GC1-02	2

No.	Material No.	Name	Qty
13	J.03.05.0139	Lower platen base B GCT-03B	1
14	J.03.05.0144	Bearing base GCT-02	4
15	J.02.05.0008	Axostyle B GCT-05B	2
16	J.03.05.0143	Holding block B GCT-04B	1
17	J.03.03.0008	O-shape washer WSH-02	4
18	J.03.05.0145	Axostyle holding block GCT-01	2
19	J.03.05.0136	Holding block B GC1-17	3
20	J.03.05.0137	Machine foot base GC1-02	2
21	J.03.03.0037	Rubber foot XD2512-148	2
22	J.03.05.0135	Machine body B GC1-01B	2
23	J.03.03.0029	Washer for gas spring 25* 15 TB-17	2
24	J.03.06.0048	Gas spring 18-80-270N	2
25	J.02.05.0002	Threaded pin 13-164 GC1-18	2
26	J.03.03.0062	washer 20-13-39.5 GC1-11	2
27	J.02.05.0002	Threaded pin 13-164 GC1-18	2
28	J.03.03.0066	washer 20-13-12.75 GC1-10	4
29	J.03.05.0078	Aluminium sleeve 14-10-44 GC1-09A	1
30	J.03.05.0078	Aluminium sleeve 14-10-44 GC1-09A	1
32	J.03.05.0138	Gas spring arm link B GC1-24B-Y	2
33	J.03.05.0078	Aluminium sleeve 14-10-44 GC1-09A	2