



## Program description

The program opens image files onto a white background by default, Transparent file types such as PNG, PSD, TIF will show on white. The selected file is then converted from the original to CMYK colours and printed using the optimal setting for OKI CMYK printers

There are options to rotate and mirror the image along with resize (zoom). The result displays as a thumbnail image. Multiple copies can be printed, tiling is manual or automatic and if an image is small enough the image can be tiled to fit 2 or more on screen.

Output is direct to the printer via the connection part of the installed USB driver. This program does not print using the standard printer driver or its settings but instead uses the driver purely to handle data communication.

Paper type/tray/size/copies is be done by the program. Options for Printer, Paper tray, Media weight, Media Size and number of copies are currently provided.

Brightness and Contrast controls and a colour profile control are provided.

The program keeps track of the last 5 used files.

## Installation

Please install to Windows 7,8 or 10.

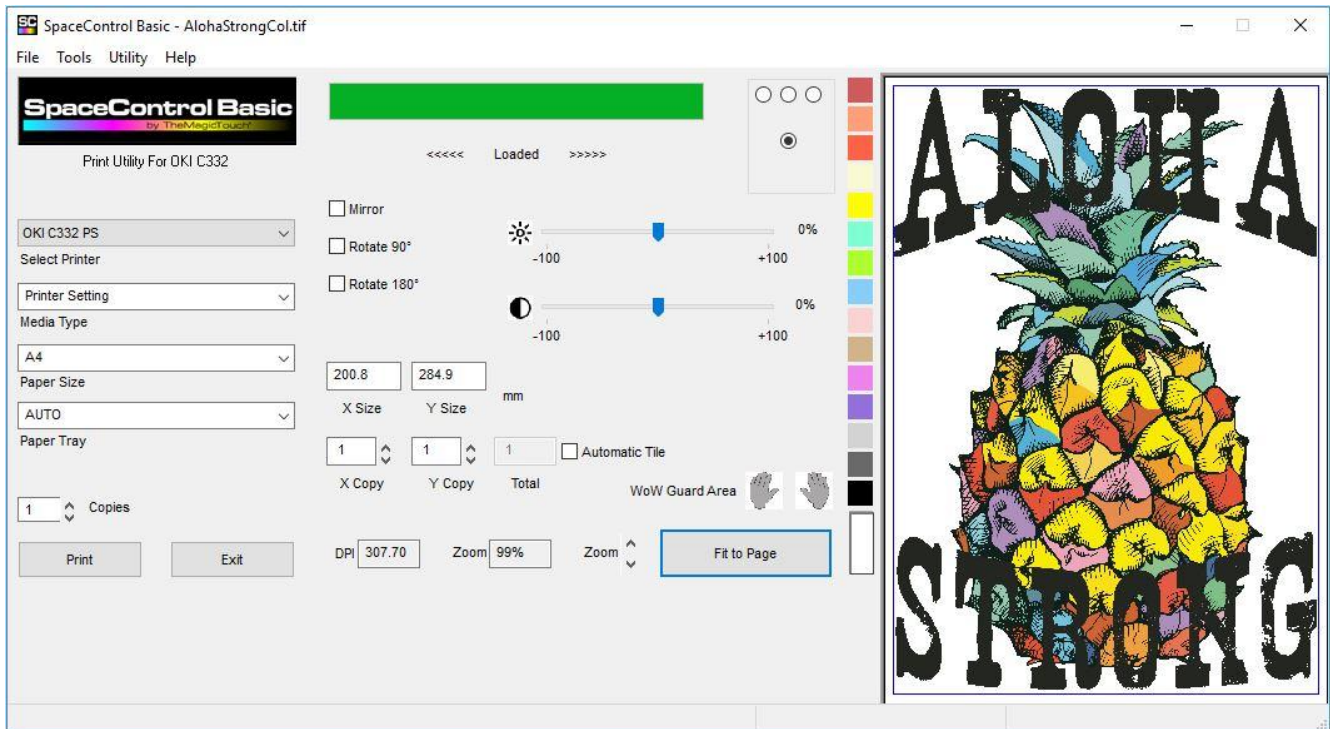
The Program uses a License file. This can be obtained from your local TheMagicTouch representative, please keep a backup copy on separate media.

Run the "SpaceControlBasicSetup.exe" provided, ideally place the License file in the same folder and the installer will install along with the program. The Installer will guide you through the installation of the utility and create an entry in Programs /All Programs and optionally a desktop Icon.

The program installs using the language selected in the installer.

Depending on permissions the License file can be installed from the "Utility" menu. This may need administrator permissions.

## The Program



Typical SpaceControl screen with a file loaded. The image shows as it would be printed. The bottom right corner can be pulled to enlarge or shrink the window.

## Menus Tabs

### File

Contains Open, Print, Print Margins, Print Blank Page and Exit options as well as a list of the 5 last used files

### Tools

Contains ICC profile settings, Custom Paper Size, Colour Dialog, Units, Save Settings, Load Settings and Load Default Settings

### Utility Menu

Contains License Install, Language and Network Utility

### Help

Contains Help and About information.

## File Menu

### Open

Allows selection of an image file from disk, loads the file and if it's the correct type displays a thumbnail with the current defaults. The name of the file is displayed in the title bar and the file is added to the top of the last used file list. Files with transparent backgrounds (TIF, PSD and PNG) are handled as well as those on white backgrounds.

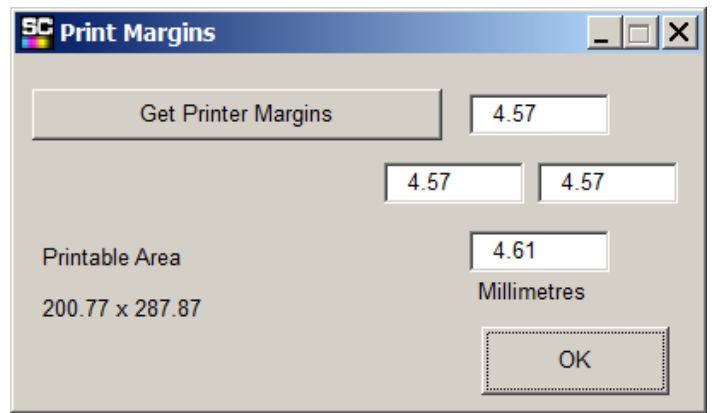
### Print

Sends the file to the licensed printer using the current settings.

### Print Margins

Displays the current margins and printable area. "Get Printer margins" reads the current printer margins, this is only available if the printer is on! Updates the display to reflect what is read from the printer. To set default margins without a printer, enter a 0 in all 4 boxes and press enter. the minimum margins for the current OKI C332 will be displayed.

To change the margins enter a new value and press enter. The printable area will update. The new margins are saved when the dialog is closed and displayed as a blue box on the thumbnail.



Note: If the printable area is reduced below the image size then the image will resize automatically to fit to new size.

Note: This dialog is used to add a custom margin to a custom paper size in the Custom Media Dialog box.

### Print Blank Page

This menu item is used to print a cleaning sheet if a transfer has been printed at the wrong setting and the toner has not fused and got onto the fuser roller. 2 or 3 sheets at heavy will remove toner on the fuser.

### Exit

Closes the program.

### 1-5 (Last used file list)

Clicking on a name here will load the displayed file and bring it to the top of the list.

## Tools menu

### ICC Profile Input

Sets the ICC profile used when reading an image, this effects the colour conversion – See Appendix

### ICC Profile Output

Sets the ICC Profile used to convert to CMYK – See Appendix

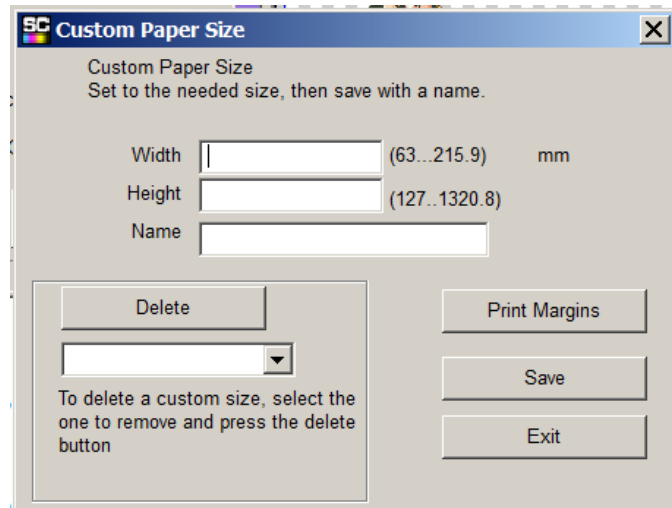
## Custom Paper Size

Enter the Width and Length in the current units. The minimum and maximum permitted values are displayed by the entries. Enter a name, it helps to use a name that properly describes the size.

If required a custom margin can be added to the paper size. Click the Print Margin button and enter any Margin needed.

Then Click Save.

The new name is added to the list.



To remove an entry, bring to the top of the list and press delete. it will be removed.

Exiting the Custom Paper Size dialogue will update the main list of paper sizes with the new entries and remove any deleted ones.

## Colour Dialog

Used to create or edit a colour profile. There is more on this in the Appendix.

## Units setting

Allows settings the programs units, default is mm, cm and inch are options.

## Save settings

Saves the current settings to disk.

## Load settings

Loads saved settings from disk. The printer, margins, colour profile and toner settings are loaded.

## Load defaults

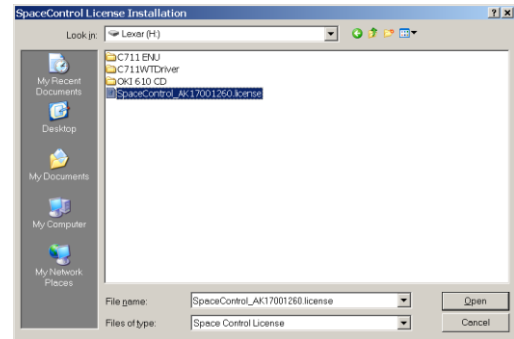
Loads a set of basic defaults including colour settings.

## Utility Menu

### License install

Opens a dialog box to select a license file and installs it. The license may be supplied with the program on CD or Flash drive or may be supplied by email. Use this option to select the file and click "open", Any already installed licences will be removed.

This copies the license file to the AllUsers SpaceControl application folder this is in C:\programdata on Win7 and later by default.

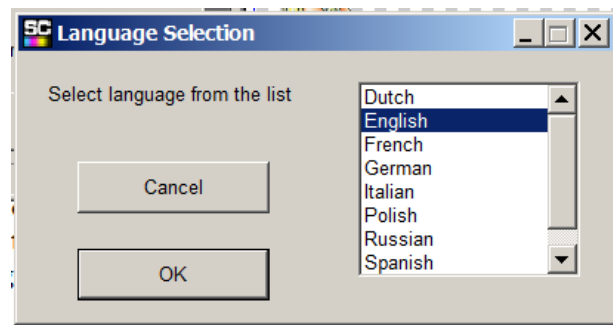


### Language

Opens a dialog to select the language. The currently installed valid language files will be shown.

When a file is selected it is loaded and the program will restart. It is best to change language without an image loaded.

The language is set for all users of the computer

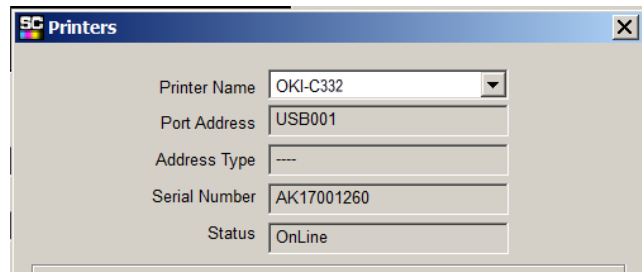
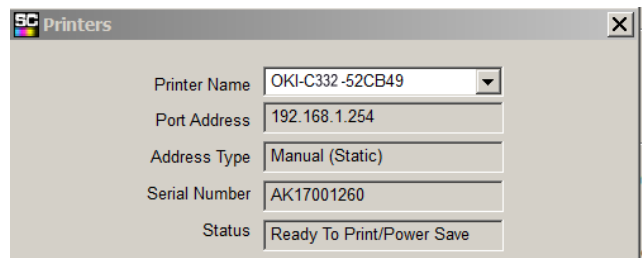


### Network Utility

Displays the Port the listed printer is on. For a network printer shows the IP address and connection type.

USB printers show the port.

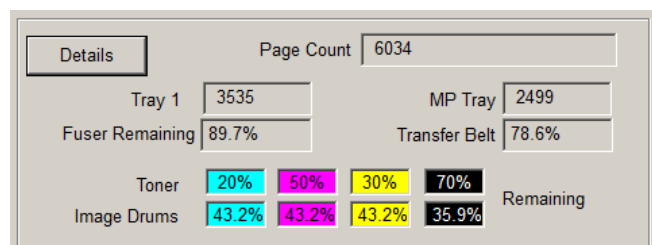
The Serial number and Status are shown.



The details option available on network printers shows the page count.

The consumable life of various items is displayed.

These are what the printer thinks are the remaining life of the items, this is calculated rather than measured and should not be relied on. It is however a useful guide to reordering consumables.



## Help Menu


### Help

Starts the Help file with various topics, the Help file will always be more up to date than the PDF documentation.


### About:

Shows the current version and license information. – See Appendix

## Variable Controls

**Brightness.** Darkens or brightens the image  
The Brightness  icon will zero the slider if clicked.

**Contrast.** Alters the contrast

The Contrast  icon will zero the slider if clicked.



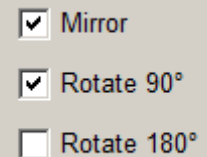
Note, unlike ordinary programs SpaceControl will not darken the background just the image.

### Mirror

Normally on for transfer paper.

### Rotate 90°

To fit landscape images on the portrait paper. May be used to get a better fit if multiple copies are required.

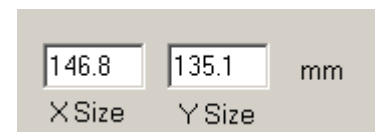


### Rotate 180°

Flips the image. May be used to print upside down so the darkest part prints first.

### X and Y size

The size of the image in the currently selected units. This can be edited, any change to one size will be reflected in the other. The program does not allow distortion of the image.



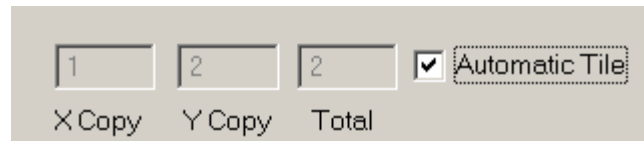
This is the overall image size not the size of the coloured parts in the middle of a transparent page.

## Tiling Display

Shows the number of copies in X and Y along with total copies.

If automatic tiling is enabled then the number is calculated and images displayed on the graphic.

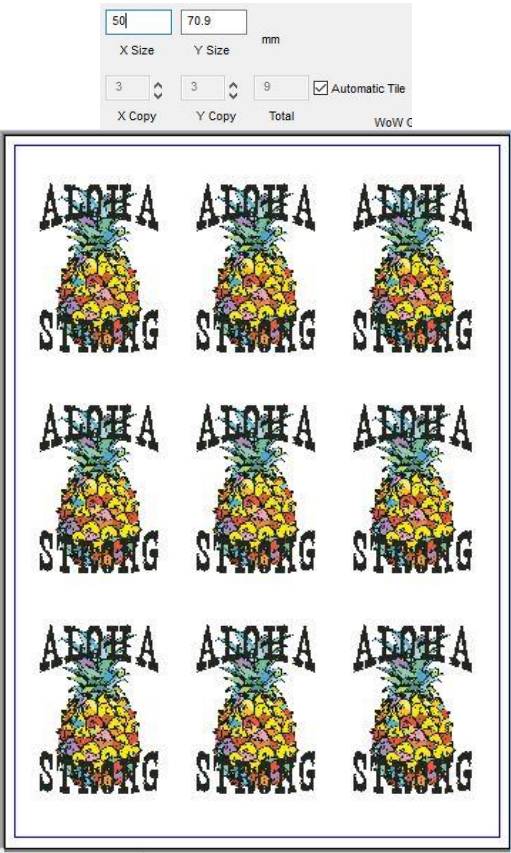
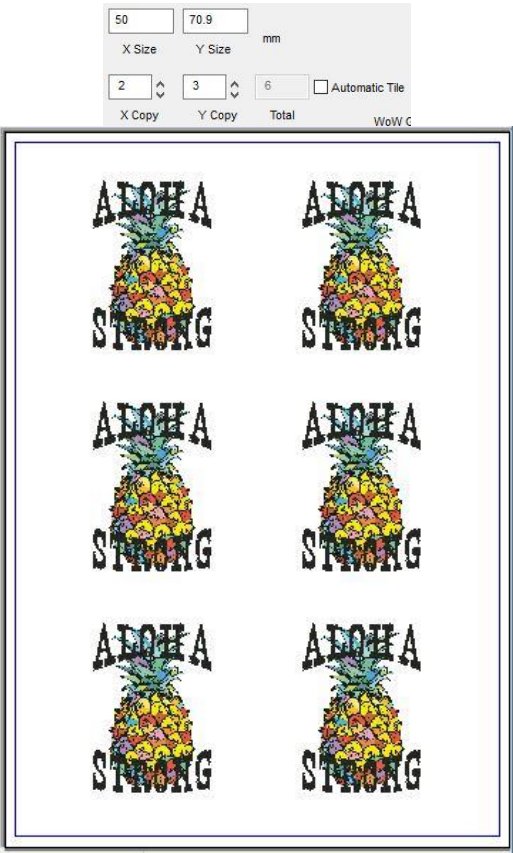
If Automatic tiling is disabled then it is possible to enter the number of copies, if the number is possible at the current size then the copies will be displayed.



## Tiling Examples

Automatic Tiling with a size of 50mm in the X axis gives 9 copies, (3 by 3).

Without Automatic on it is possible to set the number of copies in each axis.

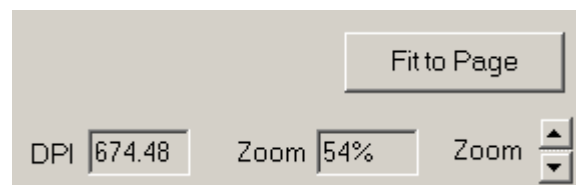
|  |   |
|--|---|
|  |  |
|--|---|

## Zoom

The Zoom control will increase/decrease the size. Hold to accelerate the movement. The image will tile automatically if the Automatic Tile control is enabled.

The new size is displayed in the X and Y size display and the current number of tiles is shown in the tiling display.

The current zoom percentage from the original file is displayed in the zoom box.



## Fit to Page

If clicked will fit the current image to the page size. When clicked a second time will return the zoom to 100% if the image is smaller than the current page size .

## DPI

Shows the effective dpi of the scaled image

Note: increasing the size of a low DPI original will not give a good result. Try at least to have 150 DPI at the printed size. 300 dpi is a good size to aim at.

## Print Options

### Select Printer.

Select the printer from the dropdown list. Normally only 1 will display but if there is a Copy1 etc it will show.

Only Suitable printers will be listed.

Note on startup it can take a few seconds to display network printers due to network latency and power saving (sleep).

### Media Type.

Select for the media type or weight. Pre-sets for all TheMagicTouch papers including T.One and WoW7.8 are available as well as the normal OKI settings. The Pre-Sets include all required selections like Mirror, Media Weight etc. and Tray restrictions.

### Paper tray.

Auto, Tray1 or Multipurpose Tray. In general for transfer paper the Multipurpose Tray and single sheet feeding is recommended.

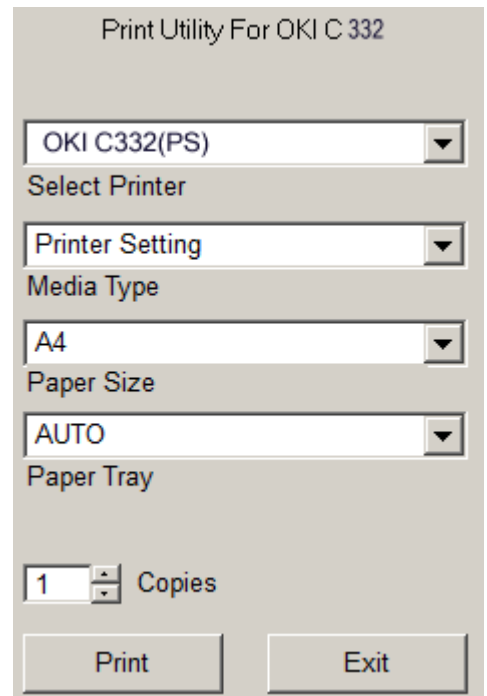
For those papers that would stack feed better from Tray1, Tray1 will be selectable. The program turns off the auto tray switch to prevent the printer selecting the wrong tray if no paper is loaded and hence wasting toner.

### Paper Size

Select the paper size to print, Has some standard sizes and any custom sizes created in Custom Paper Size option. There are additional non-standard sizes like A4XL (420 by 216mm ) which are available in TheMagicTouch media like TTC3.1 and CPM6.2 etc.

### Copies.

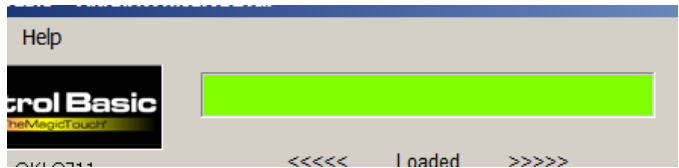
Sets multiple print copies





## Progress Bar

The bar at the centre top shows progress when loading, converting or printing files. A number of different messages may display under it.



Note:

If the number of copies is such the overall dpi is too great to print, a message will be displayed.

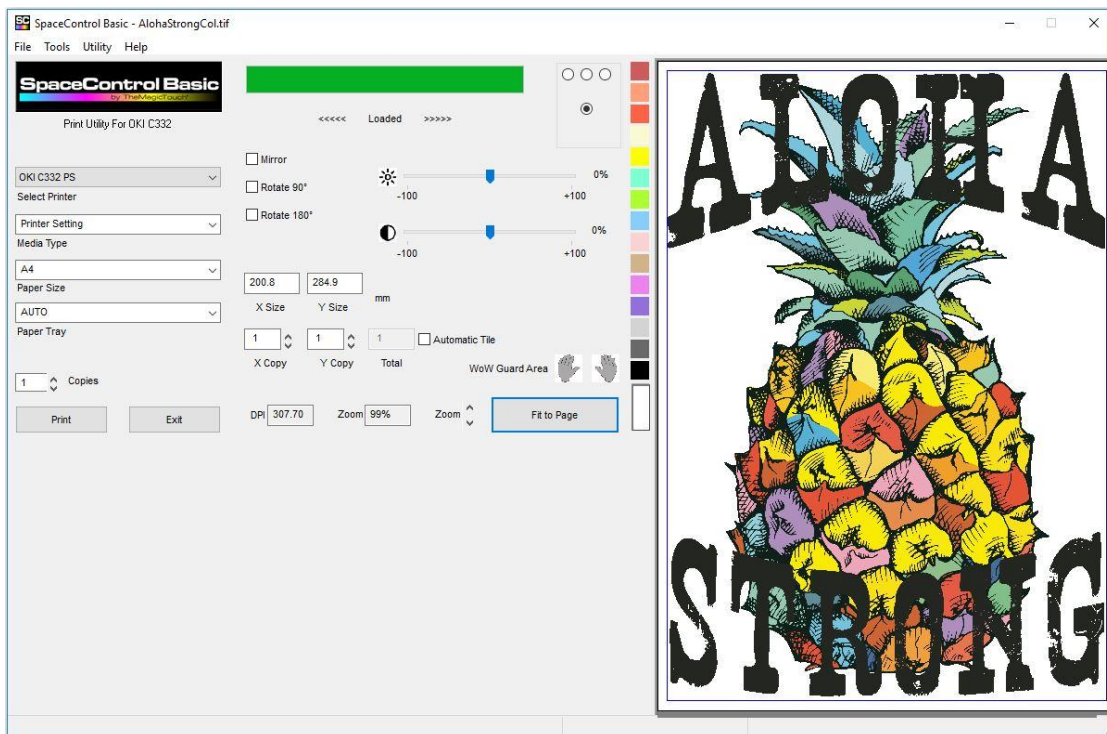
This is normally caused by a large number of small copies, The effective resolution has become too large to print. The original artwork needs its resolution reduced in a graphic program to keep the print size down.



In general the image size should be 200 to 400 dpi at the actual print size. SpaceControl can produce huge print files when tiling, these can be very slow to print.

## Screen Size or Window Size

Pulling the bottom right corner of the window with the mouse enlarges the window for better preview.



## File Compatibility

The following are currently supported.

### File formats

Adobe Photoshop PSD (Both RGB and CMYK) with transparency.

PSD (Both RGB and CMYK) without transparency

TIF RGB type with Transparency (uncompressed and LZW, Zip compression is not supported)

TIF without transparency

PNG (Portable Network Graphics) with transparency.

PNG without transparency

GIF (Graphic Interchange Format) with transparency.

GIF without transparency

Windows bitmap BMP

JPG/JPEG (Joint Photographic Experts Group)

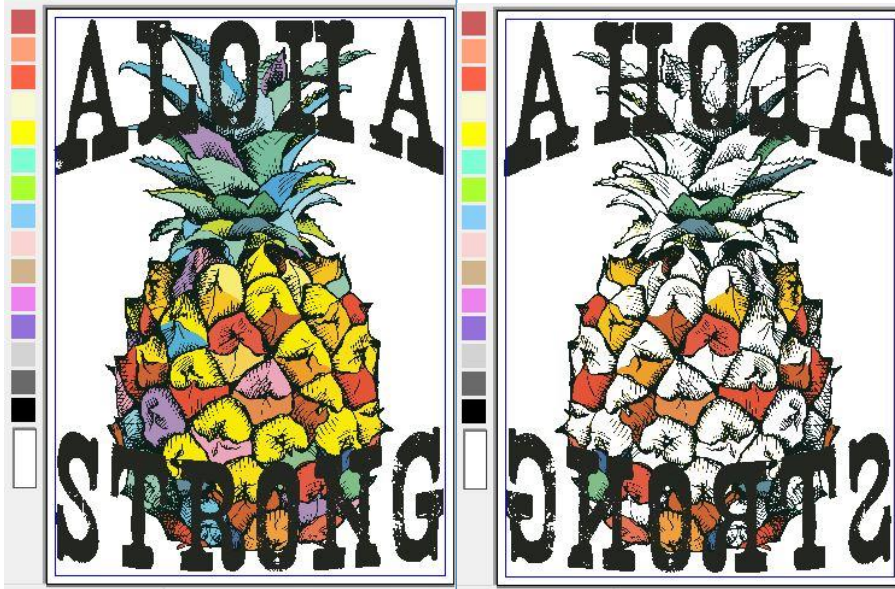
Note the GIF format only supports 256 colours so should not be used for full colour images, for limited colour images like Logos it is usable.

**CMYK JPG/JPEGs are not supported!**

## Appendix

### T.One and WoW

For these products a minimum amount of toner is needed. If T.One or WoW7.8 is selected the program will remove all areas below this density.



For example, an image opened in Printer Setting will show as is. Selecting T.One or WoW7.8 will remove all colours that have too little density to work with those papers.

T.Foil requires a level of toner as well but in this case the program will lay down a rich black colour to make it work. For Foil the best images have a transparent background as this allows easy detection of the image. In the case of JPG images the compression artefacts can make the image unusable. SpaceControl attempts to reduce the problem but there will often be damaged edges.

### ICC Profiles

The program uses ICC profiles to convert the loaded file to CMYK for printing, a profile is also used to convert the CMYK image to RGB for display purposes.

The ICC Input Profile should be set to a suitable profile for RGB conversion. Provided with the program is "sRGB" and "RGB\_input" profiles for this use. Most RGB images and Camera images are sRGB and this is set as the default.

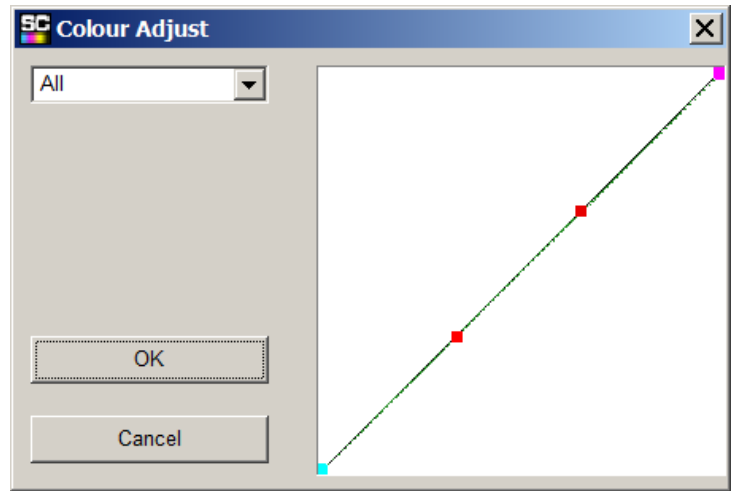
The ICC Output profile should be set for a printer profile. A set of OKI profiles are provided and initially the profile for the License file is selected. For example, with an OKI C332 License the profile will initially be set to "OKC332P2.ICM"

## Colour Adjust Dialog

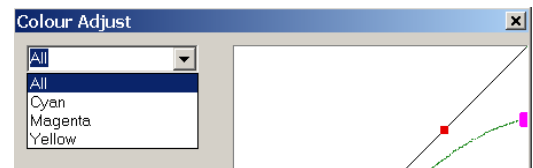
From the tools menu the colour adjust dialog can be selected.

The colour adjust dialog allows altering of the colour profile. When selected from the tools menu it opens with the current settings.

The initial screen allows 3 channels (CMY) to be altered together – they will all have the same value – choose the colour to adjust from the drop down. As a colour is altered the Thumbnail will reflect the changes.

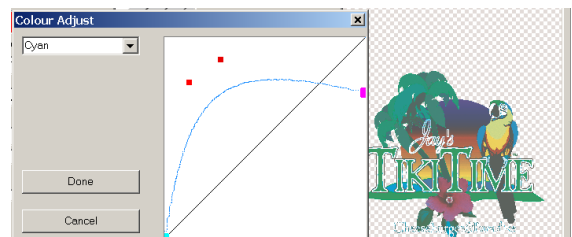


To alter the colour click on one of the red dots with the mouse and drag it, it will pull the curve around. For the technical these are Bezier curves and the red dots the handles. The Magenta block can be moved up and down with the mouse, this sets the maximum of the colour.

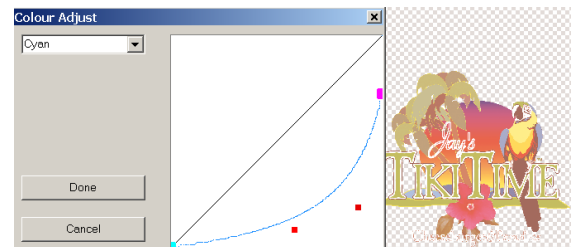


## Examples

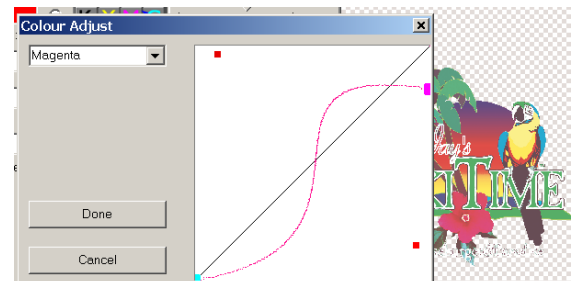
Here the Cyan curve is boosted to extreme



In this the Cyan is reduced leaving yellow and Magenta and just a bit of cyan



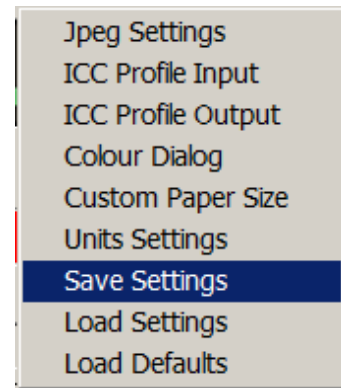
This example shows the Magenta being altered. Here the dark magenta areas have more magenta and the light less



Once a profile has been changed click Done to keep the settings or Cancel to abandon them.

If a profile is kept then it can be saved from the tools menu. Select the "Save settings" option and select a suitable folder, give it a name. The extension used is .scfg.

These may be reloaded at a different time. This allows the possibility of different profiles for different materials.



## The About Dialog

The About dialog contains the Release version and the Program version.

Also displayed is the current license. Without a license the program works but printing is not possible. If the correct license is installed and the printer on then information is displayed on the licensed printer.

Network printers may display IP addresses or WSD ports depending on installation.

If the printer is off or the license is incorrect then the current installed license (if any) is displayed.



Licences are available from your local TheMagicTouch Sales Office.

A list of Master Distributors can be obtained from <http://www.themagictouch.com>

The program "SpaceControl" and all its variants are Copyright Alan Norman 2011/2019 and licensed to TMT Marketing Services BV for release through TheMagicTouch Sales Network. All Rights reserved.